



LOUISIANA DEPARTMENT OF PUBLIC SAFETY & CORRECTIONS  
PUBLIC SAFETY SERVICES

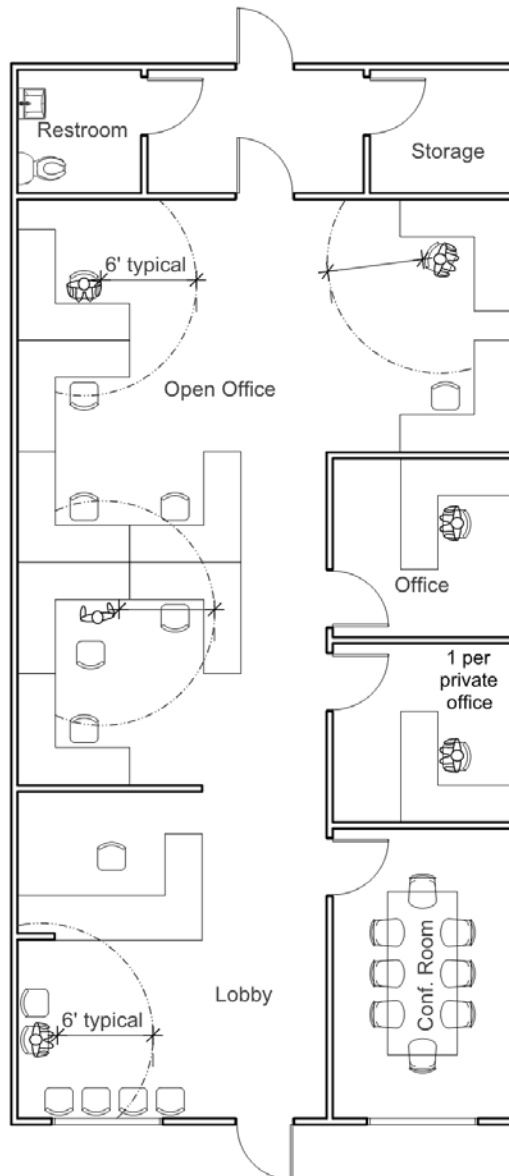


H. "BUTCH" BROWNING, JR.  
STATE FIRE MARSHAL

## OFFICE OF STATE FIRE MARSHAL

### Sample Spacing Layout

Normal maximum capacity = 24 → Phase 1 maximum capacity = 6 (25%)



### Referenced Documents:

- Essential (Critical Infrastructure) Services remain operational with guidelines in place. See: [https://gov.louisiana.gov/assets/docs/covid/Essential-Infrastructure fact-sheet.pdf](https://gov.louisiana.gov/assets/docs/covid/Essential-Infrastructure%20fact-sheet.pdf)